



# Clover Hill State School

Expect Excellence

## International Study Program Information Booklet

The Queensland  
Department of Education  
trading as:  
Education Queensland  
International (EQI) CRICOS  
Registration Number  
00608A.



# Table of Contents

1.	School Details .....	5
2.	Administration.....	5
3.	School Vision, Commitment and Expectations .....	5
4.	International Team.....	6
5.	Emergency contacts (during school hours) .....	6
6.	Emergency contacts (after school hours and on the weekends) .....	7
7.	Critical or life threatening situations - dial Triple Zero (000) .....	7
8.	School Map and Facilities .....	8
9.	Orientation .....	9
10.	Culture shock.....	11
	Honeymoon phase.....	11
	Frustration/ Distress phase.....	11
	Adjusting phase .....	11
	Acceptance/ Autonomy phase.....	12
11.	International Student Policies Guide .....	13
12.	Communication .....	13
13.	Contacting staff .....	14
14.	School absence.....	14
15.	Behaviour .....	15
16.	Student services and support programs.....	16
17.	Fees .....	17
18.	School policy and procedures.....	17
19.	School Uniform and Uniform shop .....	19
20.	Academic Expectations.....	19
21.	English Support .....	19
22.	Booklist and bookshop .....	19
23.	Transport - Bus, Tram, Train.....	19
24.	School Sports Houses .....	20
25.	Excellence Programs   Specialist Lessons.....	21
	Dance X.....	21
	Music X .....	21
	Netball X .....	22

	STEM X .....	22
	Touch X .....	22
	Excellence Awards .....	22
26.	Club & Extra-Curricular Activities .....	22
	Dance .....	22
	Maths.....	23
	Check Mates .....	23
	Kokoda Challenge .....	23
27.	Kids Tribe .....	23
28.	Swimming Lessons.....	24
29.	School Camps and Excursions.....	24
30.	School Food   Tuckshop   KOOL-E Cafè .....	25
	Lunch Box.....	25
	Tuckshop   KOOL-E CAFÈ .....	25
31.	Outside School Hours Care (OSHC).....	26
32.	Volunteering Opportunities.....	26

# Principal's Welcome

Welcome to Clover Hill State School and to the Gold Coast; a city known for its beauty, lifestyle, and vibrant multicultural community. At Clover Hill, our motto “Expect Excellence” is not just words, it is a lived experience that shapes the learning, growth and connections of every student, every day.

I am the Principal, Martine Gill, and it is a privilege to lead this dynamic and high-performing school. Clover Hill has built a reputation for quality education, expert teaching, and a commitment to the success of every child. What makes our school truly unique, however, is the heart behind it and our belief in nurturing the whole child, so they grow with confidence, purpose and compassion.

Our International Student Program is a celebrated part of our community and it enriches our school by sharing culture, language and perspectives with local students. From the very first day, every student is known, valued and challenged to reach their potential.

Learning at Clover Hill combines strong academic foundations with opportunities in sport, the arts, leadership and innovation. Our classrooms are purposeful and inclusive, with high expectations matched by care and connection. Beyond the classroom, students enjoy diverse extra-curricular programs and Excellence Pathways in Dance, STEM, Music, Netball and Touch Football, ensuring every student can find their passion and thrive.

We also understand that studying away from home is a big step. That is why we place great importance on building strong partnerships with families working together to ensure each student feels supported and safe.

At Clover Hill, we want every student, local and international, to graduate as a confident Clover Graduate who is capable, curious, and ready to succeed anywhere in the world.

On behalf of our staff and students, I warmly welcome you to Clover Hill State School. We look forward to sharing this exciting journey with you.

## Welcome from our International Programs Department

We hope your child's experience of living and studying in Queensland is both enjoyable and fulfilling. The initial weeks may feel overwhelming, tiring, and unfamiliar as they adjust to new routines and surroundings, but there will also be moments of excitement and discovery. A supportive network of staff and students is available to assist in making this transition as smooth as possible.

We encourage you to guide your child in taking full advantage of the wide range of opportunities available at Clover Hill. With an exceptional selection of academic programs and extra-curricular activities, we are committed to providing a comprehensive and enriching educational experience. Should you have any questions, our staff are always ready to offer assistance and further information about the college.

If you would like to contact the International Programs Department, please either email us at [international@cloverhillss.eq.edu.au](mailto:international@cloverhillss.eq.edu.au), call us on 07 5559 4111 or visit us at the International Department office. We look forward to working with you and sharing your progress while you are at Clover Hill State School.

Clover Hill State School International Department 07 5559 4111 [international@cloverhillss.eq.edu.au](mailto:international@cloverhillss.eq.edu.au)

## 1. SCHOOL DETAILS

Physical Address:	26 Clover Hill Drive, Mudgeeraba QLD 4213 Australia
Office hours:	Monday - Friday 8:00am – 3:30pm
Telephone:	07 5559 4111
School Absentee Text Number:	0437 891 272
International email:	<a href="mailto:international@cloverhillss.eq.edu.au">international@cloverhillss.eq.edu.au</a>
Administration email:	<a href="mailto:admin@cloverhillss.eq.edu.au">admin@cloverhillss.eq.edu.au</a>
Absences:	<a href="mailto:absences@cloverhillss.eq.edu.au">absences@cloverhillss.eq.edu.au</a>
Enrolments:	<a href="mailto:enrolments@cloverhillss.eq.edu.au">enrolments@cloverhillss.eq.edu.au</a>
Website:	<a href="http://www.cloverhillss.eq.edu.au">www.cloverhillss.eq.edu.au</a>
Facebook:	<a href="https://www.facebook.com/CloverHillStateSchool/">https://www.facebook.com/CloverHillStateSchool/</a>

## 2. ADMINISTRATION

Role	Name	Telephone/Contact
<b>Administration</b>		
Principal	Martine Gill	07 5559 4111
Deputy Principal Prep – Year 1	Jason Harvey	07 5559 4111
Deputy Principal Year 2 – Year 3	Petrina Lewis	07 5559 4111
Deputy Principal Year 4 – Year 6	Leigh Fletcher	07 5559 4111
International Student Coordinator	Kirsty Huegill (Tues, Thurs)	07 5559 4111
Head of Department: Curriculum	Shannon Meyers	07 5559 4111
Head of Support Services	Karen Priest	07 5559 4111
<b>Financial Matters</b>		
Business Manager	Andrea Bosson	07 5559 4111
<b>Administration Team</b>		
	Megan Stovin	07 5559 4111
	Maree Denning (Mon, Tues, Thurs, Fri)	07 5559 4111
	Kirsty Huegill (Mon, Wed, Fri)	07 5559 4111
<b>Student Attendance</b>	Administration Office	07 5559 4111
<b>Student Wellbeing and Support</b>		
Guidance Officer	Marlene Campbell (Mon, Tues, Wed)	07 5559 4111
Speech Pathologist	Aryn Cronan (Thursday)	07 5559 4111

## 3. SCHOOL VISION, COMMITMENT AND EXPECTATIONS



### School Expectations

Our school offers your family a safe and supportive learning environment with a strong focus on Positive Behaviour for Learning. This is exemplified through our school wide expectations of:

- I am Safe
- I am Respectful
- I am a Learner

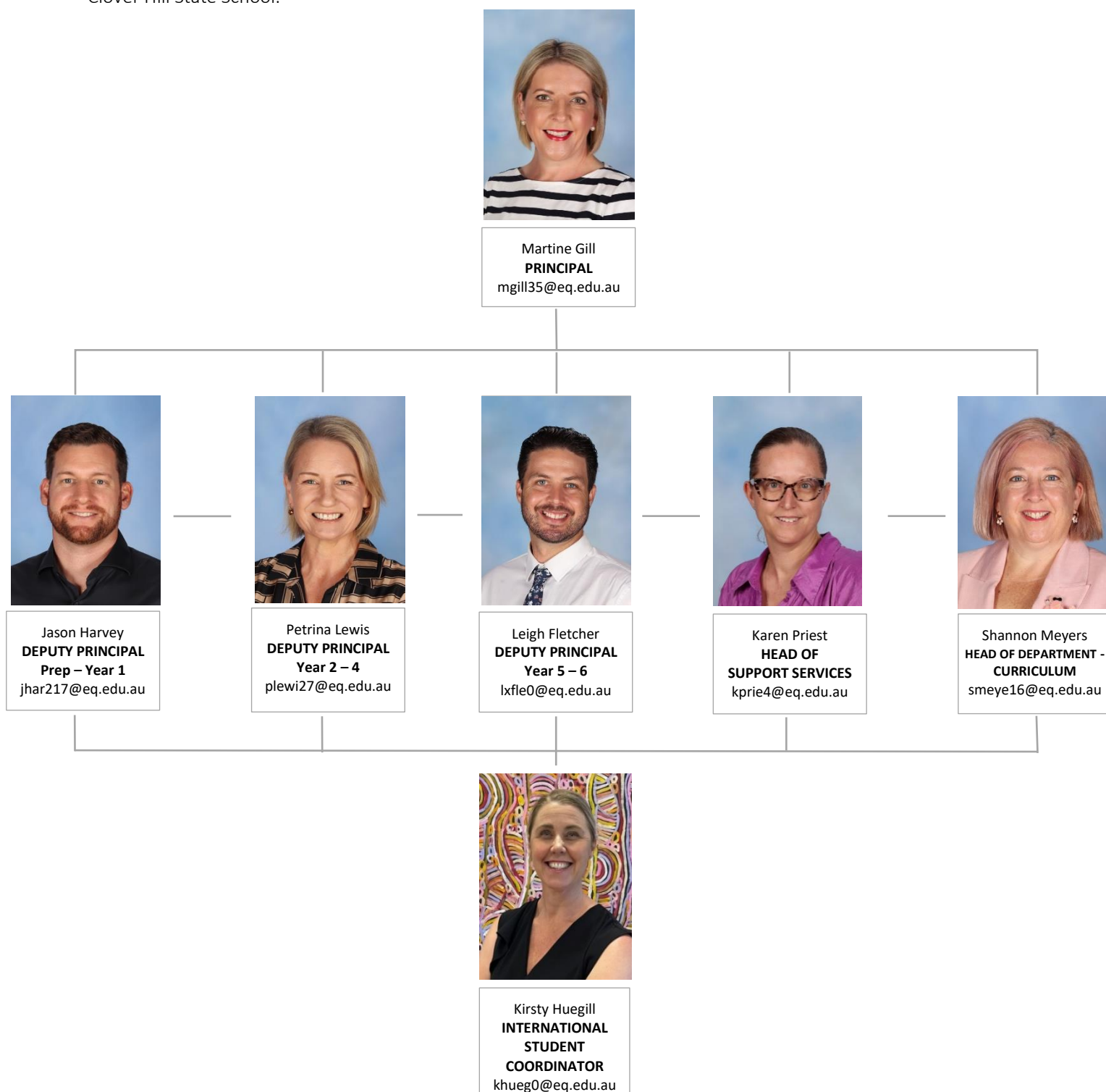
### School Commitment:

To provide opportunities for our school community to challenge, enrich, connect, inspire and create.



#### 4. INTERNATIONAL TEAM

The International Team are here to guide your child with their studies and to support them during their time at Clover Hill State School.



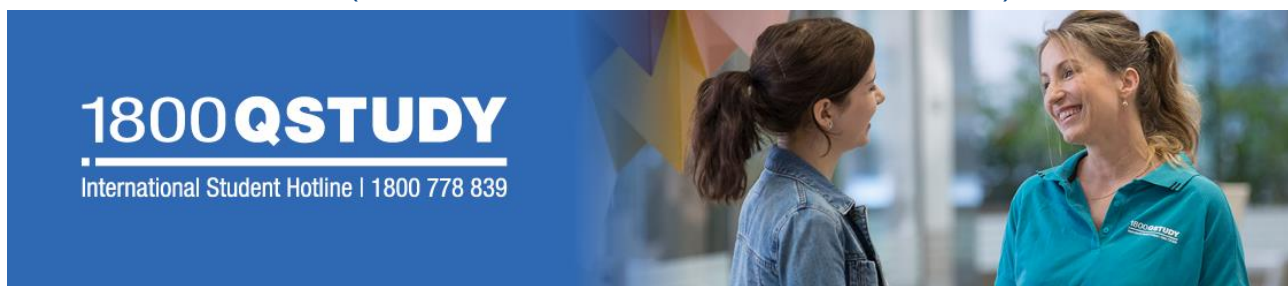
#### 5. EMERGENCY CONTACTS (DURING SCHOOL HOURS)

An emergency is a situation that may/ does affect your student's health, safety or welfare.

In the event of an emergency during school hours please contact any of the people below immediately.

Name	Role	Contact
Kirsty Huegill	International Student Coordinator	0459 880 695
Administration Office		07 5559 1444

## 6. EMERGENCY CONTACTS (AFTER SCHOOL HOURS AND ON THE WEEKENDS)



Your child's safety is our number one priority. Because of this, we work with our partners to ensure they enjoy a safe and high-quality study experience. All Overseas students studying an international program at an accredited International Student Program (ISP) school and their parents can use our student support service called 1800 QSTUDY (1800 778 839).

The 1800 QSTUDY service provides support for you, your authorised contacts and Education Queensland International (EQI) homestay hosts and responds to incidents that involve Overseas students outside school hours.

You can call 1800 QSTUDY before **9.00am** and after **3.00pm** on school days, and **24 hours** a day during weekends, public holidays and school vacations.

For more information read the <https://eqi.com.au/student-support/hotline> or the [1800 QStudy Brochure](#).

What is the free call 1800 QSTUDY?

1800 QSTUDY (+61 1800 778 839) is a free support phone service for Overseas students studying in state schools in Queensland. The service provides access to advice and assistance 24 hours a day, seven days a week. This also includes an emergency after-hours service which manages incidents for Overseas students participating in the International Student Program, Exchanges and Study Tours.

When should I use the 1800 QSTUDY service?

During school hours, school staff are your main point of contact but when school is closed and you would like to report an issue or you need urgent assistance, then phone free call 1800 QSTUDY.

At these times:

- Monday to Friday before 9am and after 3:00pm
- Any time on the weekends (Saturday and Sunday)
- Any time during school holidays and public holidays

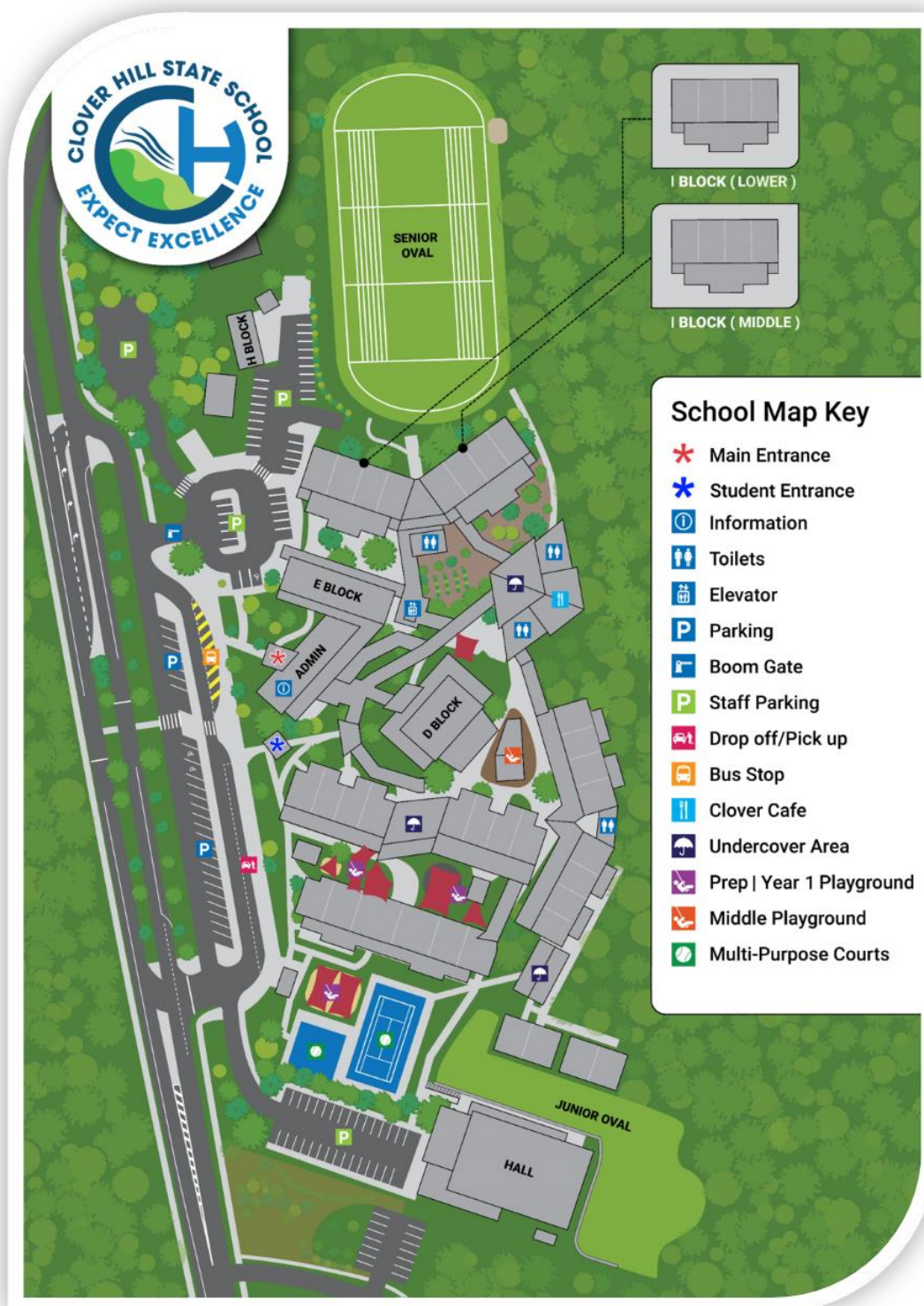
## 7. CRITICAL OR LIFE THREATENING SITUATIONS – DIAL TRIPLE ZERO (000)

A critical or life-threatening situation includes:

- immediate danger
- physical or sexual assault
- serious injury or illness
- student threatened with violence
- there has been a death

You can download the [Emergency+](#) application (app) from the Apple, Google and Microsoft app stores. The [Emergency+](#) app helps provide critical location to emergency services.

## 8. SCHOOL MAP AND FACILITIES





## 9. ORIENTATION

The Clover Hill State School International [Starting School](#) program been designed to:

- support your student's wellbeing
- help your student adjust to study in Australia
- support your student's academic success

### Daily Timetable

8:50am	First Bell rings. Students Leave undercover area to line up and wait for teachers outside classrooms.
8:55am	Commencement of Session 1 and Session 2 learning
9:00am	Session 1
11:00am	<i>First Break – children move to an allocated eating area</i>
11:15am	Children are allowed to play after their lunch is eaten, children play in designated areas
11:40am	Music plays – Students cease play, visit the toilet, wash hands and have a drink before assembling at the class line-up areas to wait for the teacher
11:45am	Session 2
1:45pm	<i>Second Break – children move to an allocated eating area</i>
2:00pm	Children are allowed to play after their lunch is eaten
2:10pm	Music plays – Students cease play, visit the toilet, wash hands and have a drink before assembling at the class line-up areas to wait for the teacher
2:15pm	Session 3
3:00pm	School finishes. Collect all belongings from bag racks. Departure for home

## International Student Orientation Program

Clover Hill State School offers a specialised orientation program for all international students and their families.

### Pre-Enrolment Interview

Attendees: Student, Parent, International Student Coordinator, Deputy Principal and Interpreter (if needed)

Formal Introduction to the School Principal

- Welcome (Brief overview of school)
- Important People and Role
  - Principal
  - International Student Coordinator
  - Deputy Principal/s
- School Expectations
- School tour
- Uniform shop and Book pack

## International Student Coordinator

- Finalising of any outstanding paperwork
- Attendance/absences
- Academic performance
- Communication
- Transitions to High School (Year 6)
- NAPLAN testing (Year 3 and 5)
- After hours contact details—1800QSTUDY
- Overseas travel
- Medical
- Overview of Student Handbook
- Questions

## First Day of School

Attendees: Student, Parent, International Student Coordinator and Deputy Principal

8:30am	Meet in Administration Office - International Student Program Coordinator.
8:45am	Walk to class and meet with Teacher
8:55am	Class to start
9:00am	Parent Meeting, any questions or queries. Set up of Q-Parents, QuickCliqs, School Locker (uniforms) Helping Hands and other school programs.



## 10. CULTURE SHOCK

Culture shock refers to the emotional and psychological reactions to an unfamiliar culture and environment.

For Overseas students, culture shock is often uncomfortable and disorienting. Although culture shock can be positive in some ways, it's important for students to understand what culture shock is, what causes it, and how to manage its effects.

Some of the signs of culture shock include:

- feeling isolated
- increasing frustration with your host country, the school and host family
- irregular sleep patterns
- spending a lot of time alone in your room
- you are easily upset and can't concentrate at school.

Culture shock can be described as consisting of at least one of four distinct phases: honeymoon, negotiation, adjustment and adaptation.

### Honeymoon phase

The first stage of culture shock is usually positive. During the honeymoon phase the differences between the old and new culture are seen in a romantic light. For example, in moving to Australia to study, you might love the new food, the pace of life, and the locals' habits. During the first few weeks most students are fascinated by the new culture.

### Frustration/ Distress phase

After some time (usually around three months, depending on the individual), differences between the old and new culture become apparent and you may feel uneasy. Excitement may eventually give way to unpleasant feelings of frustration as a person continues to experience unfavorable events that may feel strange. Language barriers, traffic safety and food differences may heighten the sense of disconnection from the surroundings.

During this phase students adjusting to a new culture may feel lonely and homesick because they are not yet used to the new environment and new people they are meeting.

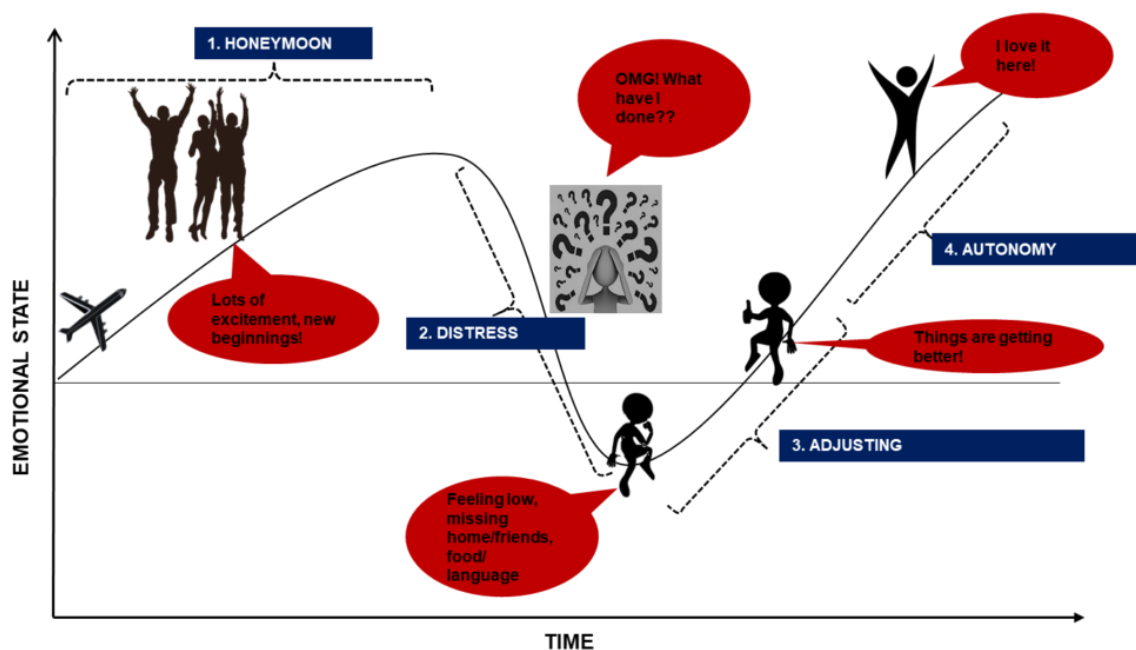
### Adjusting phase

After some time (usually 6 to 12 months), a person grows accustomed to the new culture and develops routines. During this phase a person knows what to expect in most situations and the host country no longer feels very new. During this phase people develop problem-solving skills for dealing with the culture and begins to accept the culture's ways with a positive attitude. The culture begins to make sense, and negative reactions and responses to the culture are reduced.



## Acceptance/ Autonomy phase

Individuals in the acceptance phase are able to participate fully and comfortably in the host culture. Mastery does not mean total conversion; people often keep many traits from their earlier culture, such as accents and languages.



If you think you are feeling culture shock, here are some things that you can do:

- Be patient with yourself as culture shock is a normal reaction to a changed environment.
- Talk about how you are feeling with your host family, friends or a member of the international team.
- Keep in contact with your loved ones back home.
- Socialise and make new friends.

It is important to remember the following:

- Culture shock is a perfectly normal part of the study abroad experience.
- It is important to remember that it will pass.
- Use the experience as an important learning opportunity, helping you to become versatile and adaptable to change. It will equip you with valuable life skills that are some of the greatest benefits of studying abroad.
- Step outside of your comfort zone, make new friends, and take full advantage of the once-in-a-lifetime experiences while you can.
- Once your study abroad experience is over, your family and friends will be ready and waiting to hear all about your adventures.

The international team are here to support you so that you meet your academic goals and have a wonderful study and homestay experience while at Clover Hill State School.



## 11. INTERNATIONAL STUDENT POLICIES GUIDE

Before you arrived in Australia you were provided with a copy of the [EQI Standard Terms and Conditions](#). The Standard Terms and Condition outline EQI policies that relate your responsibilities and rights and EQI's responsibilities and actions required to be taken during your child's course of study in Queensland.

## 12. COMMUNICATION

We believe that good communication between home and school is important for a great primary school experience. To keep you informed about what's happening at our school, we provide key information through the following:

### School News and Emails

Clover Hill shares important information on email, regarding school matters and is a primary means of communication between the school and home. The Principals Post is produced every third Friday and issued to each family electronically via email, these can be found on the School's website [Clover Hill Newsletters](#).

### School Website

General information and the school newsletters can be accessed on the [website](#).

### Qparents App

Qparents is a secure, online portal that has been created by the Department of Education to provide parents of Queensland state school students with 24-hour access to their child/ren's information such as excursion permissions, attendance details, report cards, invoices (payment via the app is available) and payment history. All invoicing and excursion permissions must be completed on the Qparents app. This app can be downloaded on to any Android, Apple or Windows Device from your app store and is free to use.

[QParents Fact Sheet](#)

### Social Media (Facebook)

Clover Hill State School has an active Facebook page which provides information on recent and upcoming events and information relevant to our school community. Interact and follow us on Facebook by searching Clover Hill State School or <https://www.facebook.com/CloverHillStateSchool/>

### Parent and Community | P&C

Our P&C has an important job to do. We would love you to be a part of it and becoming a member is free. Our meetings are held on the fourth Tuesday of every month, in the school hall meeting room at 7:00pm. Clover Hill P&C Association is a place where all are welcome, and all make a difference. To find out more information please visit our website [here](#).





### 13. CONTACTING STAFF

You may contact your child's teacher by way of their professional email account – this is a great way for staff to communicate with families. We encourage you to speak directly with your child's teacher to negotiate the best way of staying in regular contact.

### 14. SCHOOL ABSENCE

If your child is to be absent from school for any time, we ask that you advise us as soon as possible. We can be notified by:

- Sending a note or email to the class teacher
- Calling or email the Administration Office
- International Student Officer 0459 880 695 or [international@cloverhillss.eq.edu.au](mailto:international@cloverhillss.eq.edu.au)
- Q Parents
- Text message

If your child arrives at school after classes have started, please send them to Administration Office for a late pass. Regular late attendance will be investigated by the classroom teacher and ISP Coordinator.

#### Leaving Early

If you need to pick-up your child/ren early, parent to report to reception and at arrival classroom will be called for student to come to reception. All children must be collected through the Administration Office.

#### Full day absences

Rolls are marked by the classroom teacher at 8:55am and 2:00pm. Rolls are marked direct to One School. Should a student be absent and no reason has been given a SMS message will be sent to the parent requesting a reason.

#### Part day absences

##### Late arrival

All students who arrive after the commencement of school are required to collect a Late Pass from the Student Services Window at the Administration Office, with the reason as to why they are late, which must be presented to the teacher upon arrival at the classroom. This is recorded on the class roll.

##### Early departures

If a Parent/Caregiver needs to collect their child before 3:00pm, please present to Administration to collect a leave pass which you will take to the classroom to collect your child. The school requires notification to our Administration staff if anyone other than a Parent/Caregiver is collecting your child from school.

To ensure the safety of your child, students departing early must be signed out at the office and collected from their classroom. This is recorded on the class roll.

#### At risk of failing to meet attendance requirements

In the [EQI Standard Terms and Conditions](#) your student is considered to be at risk of failing to meet attendance requirements if:

- the student/s is absent for five consecutive days or more.
- their attendance falls to 90% of the course contact hours in any [school term](#); or
- the school has concerns about their attendance record.

The school may require a meeting with you to discuss your student's attendance record and provide evidence explaining the absences (such as medical certificates).

If attendance falls to 85% of the course contact hours in any term we will provide you as the parent, legal custodians or DHS approved guardian a written warning.

#### Unsatisfactory attendance

If your student/s do not maintain at least 80% of course contact hours, EQI will notify you

in writing of their intention to report your student to authorities for not achieving satisfactory attendance. EQI may exercise discretion not to report if:

- evidence is provided that demonstrates compassionate or compelling circumstances explaining the absences.
- EQI are satisfied that, in all the circumstances, it is reasonable not to report; and
- your student/s' attendance record is at least 70% (if attendance falls below 70%, EQI is required by law to report your student).

If you receive a notice of EQI's intention to report your student to authorities, you have the rights set out under the Appeals Policy section.

You can read in more detail about your attendance requirements at:

- [EQI Standard Terms and Conditions](#)
- [EQI Attendance – Subclass 500 \(schools\) visa procedure](#)

## 15. BEHAVIOUR

Clover Hill State School is committed to providing a safe, respectful and disciplined learning environment for all students, staff, parents and visitors.

The Clover Hill State School [Student Code of Conduct](#) sets out the responsibilities and processes we use in our school to promote a productive, effective whole school approach to discipline and is available on the school website. Its purpose is to facilitate high standards of behaviour from all in the school community, ensuring learning and teaching in our school is prioritised, where all students can experience success and staff enjoy a safe workplace.

Clover Hill State School has a proud tradition of providing a safe and supportive learning environment for all our students as outlined in section 3.

We believe strong, positive relationships between all members of our school are the foundation to supporting the success of all students.

[EQI Standard Terms and Conditions](#) state that at school your student/s must:

- participate actively at school.
- take responsibility for their own behaviour and learning.
- respect other members of the school community and the school environment and property.
- cooperate with staff and others in authority; and
- comply with the Clover Hill State School's rules – Student Code of Conduct and school policy and procedures

At all times your student/s must:

- comply with Australian laws and with the conditions of their student visa.
- not drink alcohol, smoke, misuse prescription medication or use illegal drugs.
- not do anything that endangers their safety or the safety of other people; and
- not do anything that may bring their school or the International Student Program into disrepute.

If your student/s' behaviour is unsatisfactory, EQI may cancel or suspend their enrolment. This may affect their student visa.

## 16. STUDENT SERVICES AND SUPPORT PROGRAMS

Clover Hill State School acknowledges that every student can learn and should be able to demonstrate progress in their learning. This includes those in need of learning support or behaviour support; those who have educational support needs arising from disability; those who are gifted and talented and those learning English as an additional language or dialect (EAL/D), or a combination of these.

It is our determined belief that students enrolled at Clover Hill deserve the dignity and right of having a fully accessible education within the classroom and school setting with a broad range of support strategies.

To equitably cater for the varying needs of students, three layers of curriculum support are provided. The appropriate layer of support is identified by school staff through analysis of student data and ongoing monitoring of student progress. These include:

- Differentiated teaching
- Focused teaching
- Intensive teaching

Clover Hill provides differentiated teaching to respond to the particular learning needs of all students as a regular part of curriculum provision. Teachers differentiate instruction in response to data and day-to-day monitoring that indicates the particular learning needs of students. This involves teachers varying what students are taught, how they are taught and how students demonstrate what they know.

Clover Hill provides focused teaching for students who demonstrate that they are not meeting year-level achievement standards or behaviour expectations. Focused teaching addresses more significant support needs and can include the provision of curriculum at a lower or higher year level.

Intensive teaching may be provided for a small number of students who require intensive teaching, following focused teaching, as they continue to perform substantially below, or above, year-level expectations in a learning area or subject or across the whole curriculum. This involves frequent and explicit instruction, with individuals or in small groups, to develop sequential mastery of concepts, skills and knowledge.

Our support team, led by the Head of Student Support Services (HOSS) consists of:

- Inclusion Teachers
- Teacher Aids
- Guidance Officer (GO)
- Speech Language Pathologist (SLP)



## 17. FEES

What do your EQI fees cover?

- Access to a Queensland Government school including payment of the Student Resource Scheme Fees
- All teaching costs
- Curriculum costs
- School-based English as an Additional Language/Dialect (EAL/D) support, if required

What is not included EQI fees?

- Passport and visa applications fees
- Travel expenses (to and from Australia and personal travel)
- Personal items (e.g. clothing, stationary, electronics)
- Optional activities
  - Sport Programs
  - Music lessons or instrument hire
- School uniforms
- School lunches or tuckshop
- Additional camps, excursions and special events (beyond standard curriculum activities)

### School Invoices and Permission Notes for Events/Excursions

During the year there will be events and excursions for your child that are additional to the school tuition. You will receive a consent form to permit your child to attend through and if there is an additional cost the school will send you an invoice through Q Parents (refer to 12. Communication). If you are happy for your child to attend, you will need to complete the consent form.

If you receive an invoice from the school, please contact the International Department (and attached the document) so we can advise who is responsible for this payment.

Please forward all invoices you receive to [international@cloverhillss.eq.edu.au](mailto:international@cloverhillss.eq.edu.au)

If you are unsure at any time, please check with your International Student Coordinator.

## 18. SCHOOL POLICY AND PROCEDURES

Please see below links the code of conducts for both parents and students.

- [Clover Hill State School Student Code of Conduct](#)
- [Clover Hill State School Parent Code of Conduct](#)





## 19. SCHOOL UNIFORM AND UNIFORM SHOP

Clover Hill State School uniform is regarded by the school community as being important in its role in encouraging a sense of identity and pride; strengthening school community cohesion; enhancing student safety, health and wellbeing and preparing students for the expectations of some workplaces. For more information on our School Uniform and Dress Code please view our policy [HERE](#).

Clover Hill State School has the following uniform types:

- Formal Uniform
- Sport Uniform
- Winter Uniform
- **Accessories** (optional)
  - Backpack with Clover Hill State School emblem
  - Book bag with Clover Hill State School emblem
  - Hair accessories with Clover Hill State School emblem

The Uniform shop is located across from the Tuckshop. The opening hours are Tuesday and Thursday 8:15am – 10:30am.

The School Locker operates our Uniform Shop. All items listed below are available for purchase directly from the Uniform Shop located at the school or online through [The School Locker Portal](#). You can order via The School Locker website, and you can pay by credit card, PayPal or direct deposit or purchase. [Uniform Price List](#)

Orders placed via The School Locker Portal will be delivered to your child's classroom on completion.

## 20. ACADEMIC EXPECTATIONS

As per the EQI website with relation to “Course Progress. It is a student visa condition that students must maintain satisfactory course progress. EQI's course progress policy outlines what satisfactory course progress is for each EQI course. Schools regularly monitor students' progress at the completion of each Semester. At this time, students will receive a Semester report. This allows early intervention strategies to be implemented to support students to achieve satisfactory course progress.

Students should be receiving at least a ‘satisfactory’ on all of their subjects, along with ‘satisfactory’ comments for ‘Effort’ and ‘Behaviour’. Students not meeting this standard will meet with the International Co-ordinator and Deputy Principal to discuss reports (issued each semester) and discuss ways to improve on these results.

Parents are welcome to contact their classroom teacher if they have any questions about classwork or homework.

## 21. ENGLISH SUPPORT

English EALD support will be available during school hours, if required. If your child is offered EALD lessons after testing, the teacher will notify parents. Please be aware that this means students will be placed in a small group to support their English learning.

## 22. BOOKLIST AND BOOKSHOP

Further information will be provided on Enrolment

## 23. TRANSPORT – BUS, TRAM, TRAIN

Information on travel across the Gold Coast/Brisbane can be access by following this link:

<https://translink.com.au/>

Phone: 13 12 30 24hrs a day

School Bus – [Translink link](#)

## 24. SCHOOL SPORTS HOUSES

The school is divided into four sporting houses – Dingo, Jabiru, Koala and Wallaby. Each of our houses are proudly named after four iconic native animals. On enrolment to our school, students are assigned to a house for sporting events. Every effort is made to keep families in the one house.

House Colours/Mascots:



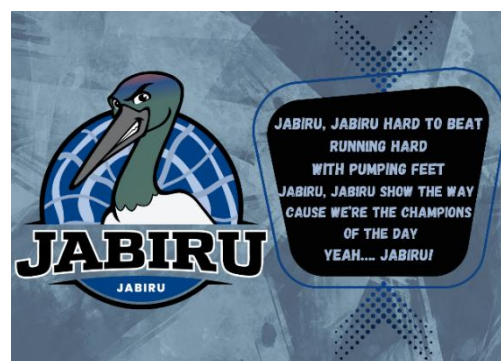
### Dingo (Nugurun)

Dingo house wear their yellow Dingo school sports polo shirts for inter-house carnivals.



### Jabiru

Jabiru house wear their blue Jabiru school sports polo shirts for inter-house carnivals.



### Koala (Borobi)

Koala house wear their green Koala school sports polo shirts for inter-house carnivals



### Wallaby (Burrgun)

Wallaby house wear their red Wallaby school sports polo shirts for inter-house carnivals.



## 25. EXCELLENCE PROGRAMS | SPECIALIST LESSONS

Students participate in specialist lessons each week. These lessons are 30 minutes to 1 hour in duration and include, Music, Physical Education and Learning connection (Prep) as part of curriculum. Specialist lessons in Chinese commence in Year 3.

### Dance X

Our Junior (Year 3 & 4) and Senior (Year 5 & 6) Dance X program is by invitation only. It is an extension program that challenges and inspires our dancers by studying various genres of dance and attending live performances.

### Music X

**Band** - The Band Program welcomes selected students from Years 4 to 6 to develop their musical skills through weekly group lessons and early morning rehearsals starting at 7:45 am. Students learn to play a variety of instruments including flute, clarinet, saxophone, trumpet, trombone, euphonium, tuba, bass guitar, and percussion, with instrument placement based on suitability.

Designed for students and families committed to growth through music education, the program fosters resilience, teamwork, and commitment. It also supports the development of stronger cognitive skills, inspired by the “Bigger Better Brains” research, helping build better thinkers through music.

**Strings program** - The Instrumental Music Strings Program welcomes students from Year 3- 6 and provides students with the opportunity to become musicians, experiencing the expressive qualities of music through weekly half-hour group lessons, performance ensemble experiences and regular supportive home practice. Students have the opportunity to learn the violin, the viola, the cello or the double bass through a robust curriculum framework, gaining expertise in literacy, technique and performance.

**Choir** - The school choir is a fun way for students to come together, sing a variety of songs, and build skills like harmony, listening, and confident performance. It promotes teamwork, self-expression, and a strong sense of community.

Students have opportunities to perform at school events, Eisteddfod, community shows, and participate in vocal progression programs. Junior Choir is open to Years 2-4, and Senior Choir to Years 5-6, offering a rewarding experience for all who join.





## Netball X

Our Netball Excellence Program is designed to inspire, challenge, and develop young athletes to reach their full potential both on and off the court. With a focus on skill development, teamwork, and competitive play, students are provided with high-quality coaching and opportunities to extend their netball journey. This program nurtures confidence, resilience, and a love for the game while supporting students to excel at school and in sport.

## STEM X

STEM-X is our school's signature STEM Excellence Program, offered separately for Years 3-6 students who demonstrate exceptional passion and talent in STEM. Through hands-on, real-world projects linked to the UN Sustainable Development Goals, students develop skills in problem-solving, creativity, and critical thinking. This program prepares our students to be innovators and leaders of the future.

## Touch X

The Touch Football-X Program aims to advance students' Touch Football abilities while also concentrating on fundamentals needed in team sport. The program focuses on skills of Perseverance, Team work, Grit and Resilience. Students train weekly and have the opportunity to test their skills at multiple tournaments throughout the year.

## Excellence Awards

Each year we continue our tradition of acknowledging excellence by celebrating the achievements of students and teachers across all year levels. Separate ceremonies are held for Prep–Grade 1, Grade 2–Grade 4, and Grade 5–Grade 6, with awards presented in areas such as academics, technology, arts and music, sport, First Nations, community care, and service to others. These events provide an opportunity for our school community to come together and recognise the dedication, growth, and success of the year.

## 26. CLUB & EXTRA-CURRICULAR ACTIVITIES

Clover Hill State School fosters a thriving community of clubs and extra-curricular activities for our students. Several external businesses hire the many facilities to conduct before and after school activities and programs such as chess, running, dance, math soccer, music and drama.

### Dance

Our dance program was established in 2006 and encompasses three areas.

**Eisteddfod teams:** these are our competition teams and students are accepted through an audition process. All students from Year 1 to Year 6 may audition. Rehearsals are run weekly, during break times.

**After school dance:** our Junior (Year 1 to 3) and Senior (Year 4 to 6) classes are open to all students from Year 1 to Year 6 and enrolment is through an expression of interest. The lessons include stretch and strengthening, development of technique, and performance skills.



## Maths

Clover Connect: Clover Comets is a mathematics enrichment program offered at Clover Hill State School in partnership with Somerset College. It is specifically designed to challenge high achieving students in Years 5 and 6. This program involves selected students working collaboratively with a high school student/s from Somerset College to extend their problem-solving skills and mathematical thinking, in preparation to compete in a variety of highly regarded mathematics competitions running in Australia.



## Check Mates

The Clover Hill School Chess Program is open to students in Grades 1–6, offering an exciting opportunity to develop strategic thinking, problem-solving, and concentration skills. Classes run once a week with expert in-person coaching, giving students the guidance they need to grow their game. Each term, our young players proudly represent Clover Hill in inter-school chess competitions at both local and regional levels, building confidence, teamwork, and a love for the game.



## Kokoda Challenge

Every year, Year 6 students are offered the opportunity to take part in the Schools' section of the Kokoda Challenge. In teams of four students and one teacher, they complete a rugged 18km course through the D'Aguilar National Park near Brisbane, honouring the Spirit of Kokoda forged by Australian troops on the Kokoda Track in Papua New Guinea during World War II. The event challenges students to demonstrate the same resilience and teamwork shown by those soldiers to reach the finish line.



## 27. KIDS TRIBE

Kids Tribe is a group of cluster schools that aims to bridge the gap between school and home, providing parents across our cluster and beyond with access to professionals. Our goal is to arm them with the confidence and skills they need to make a positive impact on their children's lives. Kids Tribe provides free community events with guest speakers that parents and caregivers can attend for expert advice on various topics such as; parenting, supporting your child, brain science, support services, etc.



Encompassing the spirit of collectivism.





## 28. SWIMMING LESSONS

Dedicated swimming lessons are delivered to students in Prep, Year 1, Year 3 and Year 5. A series of five (5) lessons are offered to students in these grade levels and are taught by qualified swimming instructors in local pools.

Under the instruction of swimming instructors, classroom teachers and educational assistants, student lessons focus on water confidence, water safety and basic strokes. The year 5 students have swimming skills incorporated into their 2 half day experience days on swim survival and safety.

<https://education.qld.gov.au/curriculum/stages-of-schooling/water-safety-and-swimming>

## 29. SCHOOL CAMPS AND EXCURSIONS

### Year 5 | Currumbin Community Farm, Currumbin Valley, QLD

Students in Year 5 are invited to attend a three-day, two-night camp at the Currumbin Outdoor and Environmental Education Centre. Set in the beautiful Currumbin Valley, students become 'cadets' and are inducted into teams—Alpha, Bravo, and Charlie—upon arrival. Working together to complete rescue-themed training modules, they develop teamwork, leadership, and problem-solving skills. The experience encourages students to step out of their comfort zones, set personal goals, and reflect on both individual and group achievements.

### Year 6 | Lake Ainsworth Sport and Recreation, Lennox Head, NSW

Students in Year 6 have the exciting opportunity to attend the Lake Ainsworth Sport and Recreation Camp, designed to deliver a transformative outdoor education experience. The camp fosters personal growth, teamwork, and resilience while encouraging a lifelong appreciation for nature. In a safe and inclusive environment, students build essential life skills and strengthen relationships with peers and teachers. Activities may include rock climbing, canoeing, archery, orienteering, and team-building challenges.



## 30. SCHOOL FOOD | TUCKSHOP | KOOL-E CAFÈ

### Lunch Box

It is recommended that a packed lunch box from home is brought to school this may include:

Fruits and vegetables | Prep to Year 3 – fruits should be cut in pieces and packed separately

Meal | for example sandwiches, sushi, sausages roll, meat pie wraps etc

Water Bottle | Compulsory

Snacks | Cookies, juice, yoghurt, muesli bar, dried fruit) – no NUTS.

### Tuckshop | KOOL-E CAFÈ

The tuckshop is open Monday to Friday from 8am to provide direct ordering to make it more convenient for you.

The tuckshop observes the Smart Choices Strategy of Education Queensland and ensures that our menu provides healthy food and drinks to students and staff.

All orders must be placed before 8:50am every morning | Either in person (Cash only) or via [Quickcliq](#).

Orders can be placed 14 days in advance.

First lunch break 11:00am – 11:45am | Eating time 11:00am – 11:15am, followed by playtime

Second lunch break 1:45pm – 2:15pm | Eating time 1:45pm – 2:00pm, followed by playtime

Tuckshop menu and placing an online order can be placed via [Quickcliq](#).

### How to Order

Follow the link to [Quickcliq](#)

- Click on Register at the top of the page
- Enter your details and click finish
- You will receive an activation email – click link provided
- You are now ready to log in to your QuickCliq account
- Add Students/Users to your account. This could be your children (students), or yourself if you are a staff member

It will be required to add your preferred payment details to this site to make these purchases.

For any further queries, please visit there Frequently Asked Questions [HERE](#) or speak with your International Student Coordinator.



### 31. OUTSIDE SCHOOL HOURS CARE (OSHC)

Helping Hands Network are your outside school hours care provider at Clover Hill State School.

The Helping Hands OSHC service is conveniently located inside the School Hall and offers before and after school care and vacation care. During the school term they operate Monday to Friday from 6:00am - 8:45am and 2:55pm - 6:00pm and from 6:00am - 6:00pm during the holidays.

At Helping Hands Network, we pride ourselves on providing children with fun, play-based learning experiences that meet all your family's needs. You can be confident that your child is in safe hands with our experienced and passionate educators. Whether your child attends Helping Hands Network daily or only occasionally, each visit is an exciting new adventure with healthy, nutritious food, awesome clubs, activities and so much more.

#### How to enrol

Enrolling with Helping Hands is easy and completely free. We don't charge any annual registration fees.

[Click here](#) to create an account and complete our online enrolment form. Select the Helping Hands service for your child's school and enter all required information into the relevant fields. Once enrolled, you can manage your bookings and cancellations with ease online.

For more information speak to our friendly service coordinator on 0437 708 354 or their website.

<https://www.helpinghandsnetwork.com.au/register/>

### 32. VOLUNTEERING OPPORTUNITIES

The following are some of the ways you can help at school:

- Accompanying excursions when needed
- Assisting in fundraising
- Joining the Parent & Community (P & C) Association
- Participating in decision making - P&C Meetings
- Assisting in events
- Parent session
- Kids Tribe Events





### **Clover Hill State School**

26 Clover Hill Drive,  
Mudgeeraba QLD 4213  
Australia

Telephone: +61 (7) 5559 4111  
Email: [admin@cloverhillss.eq.edu.au](mailto:admin@cloverhillss.eq.edu.au)  
Facebook: @Clover Hill State School

**[www.cloverhillss.eq.edu.au](http://www.cloverhillss.eq.edu.au)**

The Queensland Department of Education trading as:  
Education Queensland International (EQI) CRICOS  
Registration Number 00608A.